

Tyersal Terrace, Bradford, West Yorkshire BD4

- ****DEPOSIT FREE OPTIONS AVAILABLE****
- IDEAL FOR PROFESSIONALS, COUPLES OR FAMILIES
- UNFURNISHED
- DRIVEWAY
- COUNCIL TAX BAND- B
- THREE BEDROOM TERRACED HOUSE
- AVAILABLE NOW
- DOUBLE GLAZING AND CENTRAL HEATING
- EPC RATING- C
- LOCAL AMENITIES, SCHOOL AND TRANSPORT LINKS WITHIN THE AREA



£1,200 Per Calendar Month - Deposit £1,384 - ** Deposit Free option Available **

Tyersal Terrace, Bradford, West Yorkshire BD4

DESCRIPTION

This three-bedroom terraced house is available ****to let**** in the Tyersal area of Bradford, offering accommodation in good condition and well suited to professionals, couples and families.

The ground floor features an open-plan kitchen, providing a practical layout for everyday living and dining. There is one reception room, offering a defined space for relaxation or entertaining. The property also benefits from one bathroom. An EPC rating of C and Council Tax Band B contribute to manageable ongoing running costs.

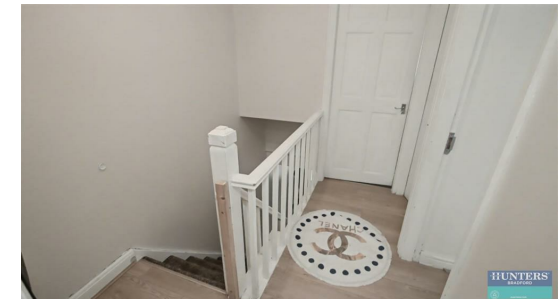
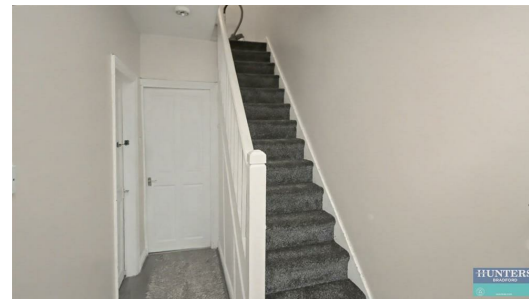
The house is well placed for access to local amenities in Tyersal and nearby areas of Bradford, including everyday shops and services. A range of primary and secondary schools can be found within the wider BD4 and surrounding districts, making the location convenient for households with children.

Public transport links are accessible, with Bradford Interchange reachable by bus or car, providing rail connections to Leeds in around 20 minutes and to Manchester via connecting services. New Pudsey station is also within driving distance, offering regular services towards Leeds and Bradford. Road links via the A647 and M606 connect Bradford to Leeds, Halifax and the wider West Yorkshire motorway network.

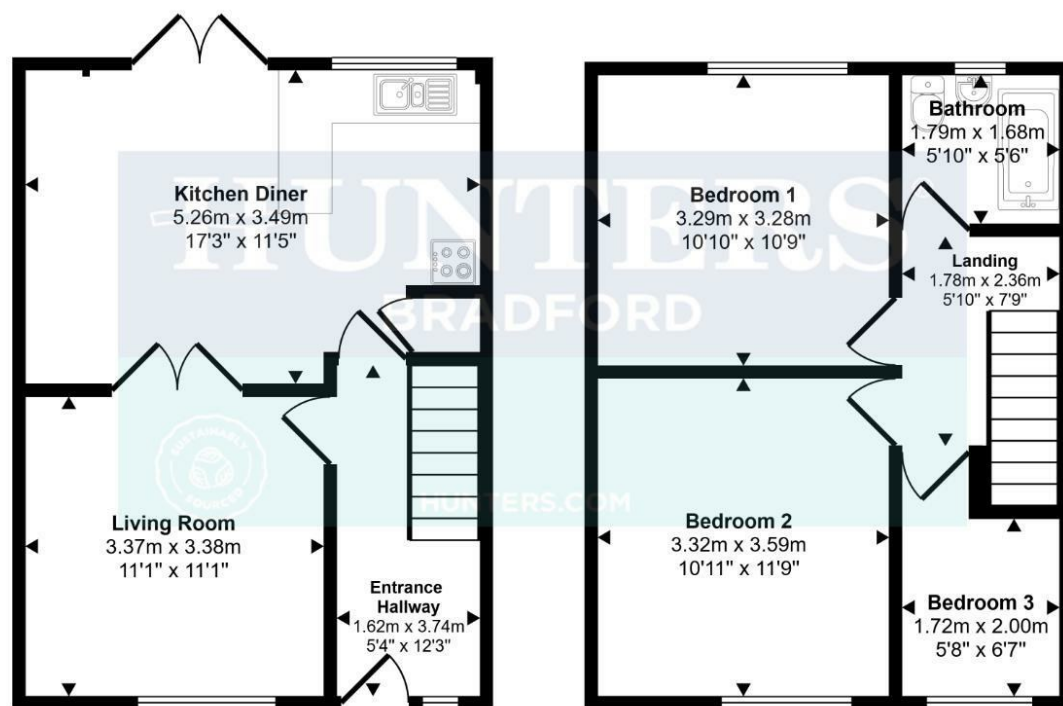
Residents can reach green spaces such as local parks in the Tyersal and East Bradford area within a short drive, providing opportunities for outdoor recreation.

**** Flatfair's No Deposit solution ****

**** This property is available with flatfair's No Deposit solution, so you won't have to pay a traditional deposit. Instead, you would pay a small check-in fee equal to 28% of a month's rent (+VAT) – significantly less than a five week deposit. This fee is non-refundable and is not a deposit so cannot be used towards covering the cost of any future damages that might occur.****







Ground Floor

First Floor

This floorplan is only for illustrative purposes and is not to scale. Measurements of rooms, doors, windows, and any items are approximate and no responsibility is taken for any error, omission or mis-statement. Icons of items such as bathroom suites are representations only and may not look like the real items. Made with Made Snappy 360.

Viewings

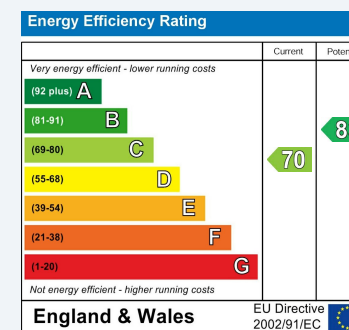
Please contact bradford.lettings@hunters.com, if you wish to arrange a viewing appointment for this property or require further information.

Valuations

For a valuation of your property, please email the team with your property details, contact information and the times you are available.

ENERGY PERFORMANCE CERTIFICATE

The energy efficiency rating is a measure of the overall efficacy of a home. The higher the rating the more energy efficient the home is and the lower the fuel bills will be.



These particulars are intended to give a fair and reliable description of the property but no responsibility for any inaccuracy or error can be accepted and do not constitute an offer or contract. We have not tested any services or appliances (including central heating if fitted) referred to in these particulars and the purchasers are advised to satisfy themselves as to the working order and condition. If a property is unoccupied at any time there may be reconnection charges for any switched off/disconnected or drained services or appliances - All measurements are approximate.

THINKING OF SELLING? If you are thinking of selling your home or just curious to discover the value of your property, Hunters would be pleased to provide free, no obligation sales and marketing advice. Even if your home is outside the area covered by our local offices we can arrange a Market Appraisal through our national network of Hunters estate agents.